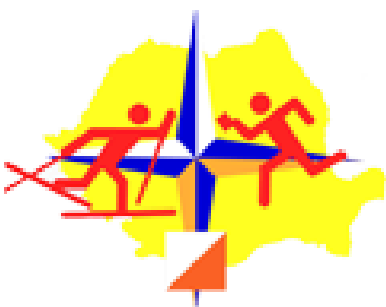


# SEOC ROU SEMOC 2022

11th South-East European Orienteering Championships  
10th South-East European Masters Orienteering  
Championships

VICTORIA, ROMANIA, 23<sup>rd</sup> - 28<sup>th</sup> of August 2022



## **11th South East European Orienteering Championships 2022**

Foot orienteering championships only for **National teams** of countries which are members of South East European Orienteering Association (SEEOA): Bosnia and Herzegovina, Bulgaria, Croatia, Cyprus, Greece, Italy, Moldova, Montenegro, North Macedonia, Romania, Serbia, Slovenia and Turkey, observer: Albania

SEEOA rules and regulations apply.

Entries are responsibility of National Federations of each country. Only a National Federation may enter competitors for these competitions: Middle Distance, Sprint Distance, Long Distance and Relay.

Incomplete teams, and teams other than national teams are not allowed to participate in Relay

## **10th South East European Masters Orienteering Championships 2022**

Foot orienteering championships only for runners older than M35/W35 from countries which are members of South East European Orienteering Association (SEEOA): Bosnia and Herzegovina, Bulgaria, Croatia, Cyprus, Greece, Italy, Moldova, Montenegro, North Macedonia, Romania, Serbia, Slovenia and Turkey, observer: Albania

SEEOA rules and regulations apply.

Entries are individual responsibility of competitors for these competitions: Middle Distance, Sprint Distance, Long Distance and Relay.

Incomplete teams, and teams other than one-nation-teams are not allowed to participate in Masters Relay.

## **Foot orienteering six-days event with 7 races, open for everybody**

The orienteering courses for individual categories are the same as for SEEOC/SEEMOC categories!

Entries are individual responsibility of competitors for each stage of 6-day-event:

- 1) Forest Sprint,
- 2) Middle Distance + Sprint Distance,
- 3) Sprint Distance\*,
- 4) Long Distance\*,
- 5) Middle Distance and
- 6) Middle Distance\*.

These races will be awarded in 3 parallel competitions, as described further. There will be victory ceremony after each last stage.

\* - the courses are similar to SEEOC races; I.O.F. rules and regulations apply for WRE events.

## Organizers:

Main Organizer: Romanian Orienteering Federation,  
Founded in 5<sup>th</sup> of February 1990, [info@fro.ro](mailto:info@fro.ro),  
[www.fro.ro](http://www.fro.ro)

I.O.F. Adviser: Todor Pedev

Supporting club: Sport Club "Chimia" Victoria



## Partners:

County of Brasov Authority, South-Eastern European Orienteering Association, Romanian Ministry of Sports



Consiliul Județean  
Brașov



MINISTERUL SPORTULUI

National Forest Authority "Romsilva", "Casa Zmeilor" Resort – Ski Dragus,  
SKV Carpathian Transilvanian Tourist Association



City Hall of Victoria and Halls of Dragus and Ucea Communes



Student's Sports Club of Victoria, Fagaras' Country Association,  
 Sports Club Ecosport, Local Forest Authorities "Arpas" & "Voila"  
 Mountain Constabulary "Sambata" & Mountain Rescue of Victoria  
 Halls of Arpas, Lisa, Sambata, Sibiu and Vistea,  
 Local Police of Victoria,  
 Companies Purolite S.R.L. and STI International S.R.L.

## General Information:

### Main events:

- 4-day Event for "11th South-East European Orienteering Championships 2022" (August 25<sup>th</sup>-28<sup>th</sup>)
- 4-day Event for "10th South-East European Masters Orienteering Championships 2022" (August 25<sup>th</sup>-28<sup>th</sup>)
- 4-day Event: 24<sup>th</sup>, 25<sup>th</sup>, 26<sup>th</sup>, 28<sup>th</sup> of August – Romanian Grand Prix
- 2-race Event: 23<sup>rd</sup>-24<sup>th</sup> of August – City of Victoria Cup
- Single race event, 27<sup>th</sup> of August – "Purolite" Cup
- Romanian Orienteering Individual National Championships for Sprint, Long and Middle Distance

### Calendar of the events

August 23<sup>th</sup> - Forest Sprint

August 24<sup>th</sup> - Middle Distance- Model Event

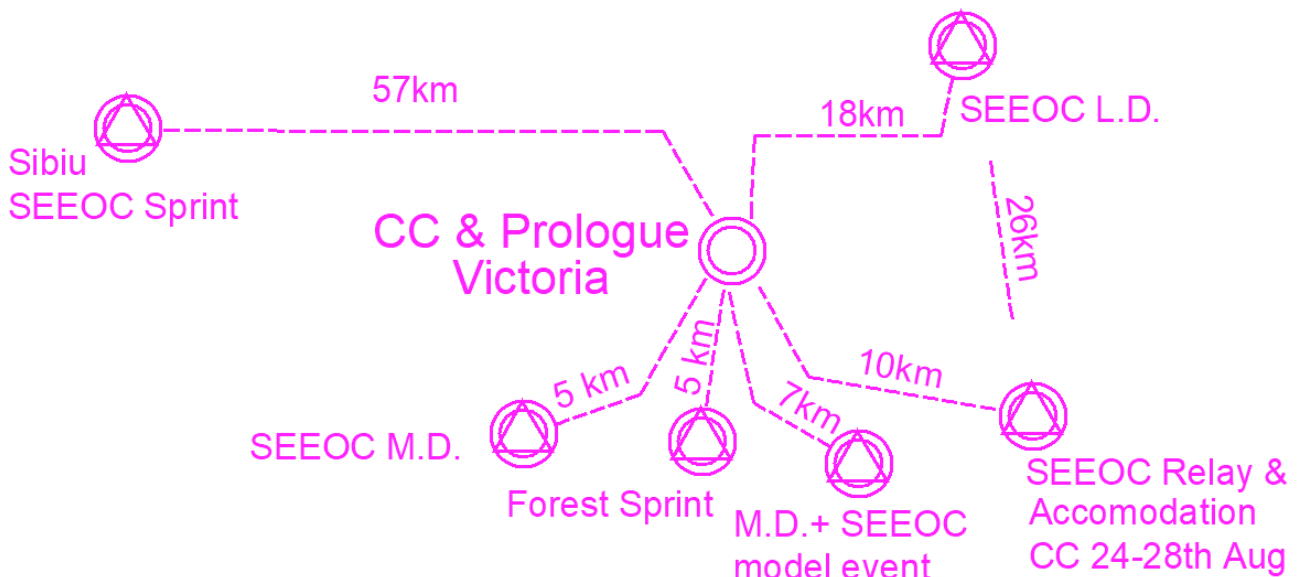
August 24<sup>th</sup> - Sprint Distance (Prologue) and Opening Ceremony

August 25<sup>th</sup> - SEEOC/SEEMOC Sprint Distance - World Ranking Event /W21E, M21E/

August 26<sup>th</sup> - SEEOC/SEEMOC Long Distance - World Ranking Event /W21E, M21E/

August 27<sup>th</sup> - SEEOC/SEEMOC Relay & Middle Distance for individuals

August 28<sup>th</sup> - SEEOC/SEEMOC Middle Distance - World Ranking Event /W21E, M21E/



## Schedule

Day	Hours	Event	Location
Tuesday August 23 <sup>th</sup>	12:00	Competition Center opens in Victoria	Victoria City <a href="#">45.730200, 24.701149</a>
	16:00	City of Victoria Cup 1 <sup>st</sup> race: Forest Sprint	Sumerna Village, <a href="#">45.690455, 24.700603</a>
Wednesday August 24 <sup>th</sup>	10:00	<b>SEE(M)OC Model Event</b> and City of Victoria Cup 2 <sup>nd</sup> race: Middle Distance	Viştea-Mare Canton <a href="#">45.692099, 24.738389</a>
	16:00	<b>SEE(M)OC Sprint Prologue</b> , 1 <sup>st</sup> Romanian Grand Prix race	Victoria - Center <a href="#">45.730200, 24.701149</a>
	18:00	<b>SEE(M)OC Opening Ceremony</b> at CC Flower Ceremony for City of Victoria Cup	
Thursday August 25 <sup>th</sup>	11:00	<b>SEE(M)OC Sprint (WRE)</b> and Romanian Grand Prix 2 <sup>nd</sup> race	Sibiu - Center <a href="#">45.796590, 24.151683</a>
	14:00	Prize Giving Ceremony for Sprint at Arena	
Friday August 26 <sup>th</sup>	10:00	<b>SEE(M)OC Long Distance (WRE)</b> and Romanian Grand Prix 3 <sup>rd</sup> race	Rucăr Village <a href="#">45.828717, 24.755555</a>
	14:00	Prize Giving Ceremony for Sprint at Arena	
Saturday August 27 <sup>th</sup>	10:00	<b>SEE(M)OC Relay</b> and “Purolite” Cup Prize Giving Ceremony for Relay at Arena	Casa Zmeilor Resort in Drăguş Village <a href="#">45.692519, 24.782093</a>
	14:00	Prize Giving Ceremony for Relay and Purolite Cup at Arena	
	20:00	Banquet at Casa Zmeilor Resort	
Sunday August 28 <sup>th</sup>	10:00	<b>SEE(M)OC Middle Distance (WRE)</b> and Romanian Grand Prix 4 <sup>th</sup> race	Sumerna, Ucea Village <a href="#">45.699138, 24.687686</a>
	13:30	Prize Giving Ceremony for M.D. and Romanian Grand Prix at Arena	

Competition Center (CC) will be in Victoria City ([45.730200, 24.701149](#)), on 23<sup>rd</sup> between 12:00-21:00, and on 24<sup>th</sup> August, between 12:00-21:00.

Between 25<sup>th</sup> and 28<sup>th</sup>, CC moves at finish arenas 1.5 hours before each race, and closes after each prize-giving ceremony.

At evening hours, CC will be open daily, at “Casa Zmeilor” Resort ([45.692519, 24.782093](#)), between 18:00-21:00 in the SEE(M)OC days (25<sup>th</sup> - 27<sup>th</sup> of August).

Team Officials Meeting (TOM) shall be organized at CC, every evening before SEEOC races, between 20-21:00 hours.



## Classes

### Classes for 11<sup>th</sup> South East European Orienteering Championships (SEEOC)

W16 W18 W20 W21E / M16 M18 M20 M21E. Entries for SEEOC are responsibility of National Federations

### Classes for 10<sup>th</sup> South East European Masters Orienteering Championships (SEEMOC)

M35 W40 W45 W50 W55 W60 W65 W70 W75 / M35 M40 M45 M50 M55 M60 M65 M70 M75

\* entries for SEEMOC are responsibility of individual clubs/ competitors

### Classes for SEEOC and SEEMOC Relay Teams

\* entries for SEEOC/SEEMOC RELAY TEAMS are responsibility of National Federations only!

W16 W18 W20 W21E / M16 M18 M20 M21E / mix35 mix45 mix55 mix65

**Classes for Purolite Cup, City of Victoria Cup**– W10 14 18 21 35 45 55 65 75, M10 14 18 21 35 45 55 65 75, OPEN Beginners, OPEN T, Baby Race (Family)

### Classes for Romanian Grand Prix

W10 12 14 16 18 20 21E 21A 35 40 45 50 55 60 65 70 75 80, M10 12 14 16 18 20 21E 21A 35 40 45 50 55 60 65 70 75 80, Baby Race (Family), OP Beginners, OP short, OP long

**Open Beginners** class is the equivalent of MW12

**Open Short** class is the equivalent (same or similar) of W55 / M65 class

**Open Long** class is the equivalent (same or similar) of W21A / M40 class

### Warning!

After the deadline is expired for final entries (August 15<sup>th</sup>), it will be possible to enter any of SEEOC/SEEMOC or for parallel races classes only if there will be some vacant places, with exception of Open Beginners, Open Short, Open Long and Baby Race.

## Entry fees - SEEOC and SEEMOC

### Entry fees for SEEOC & SEEMOC classes will be according to SEEOA rules:

SEEOC: Start fee for SEEOC participants is 30 € for all the 4 races, from 25<sup>th</sup> to 28<sup>th</sup> of August.

SEEMOC: Start fee for SEEMOC participants is 40 € for all the 4 races, from 25<sup>th</sup> to 28<sup>th</sup> of August.

The fees include maps for SEEOC/SEEMOC Model Event, if runners don't participate at the parallel event.

SEE(M)OC participants entry fee for Prologue Sprint on 24<sup>th</sup> of August will be 8 € before July 11<sup>th</sup>, and 10 € / participant before August 15<sup>th</sup>.

**Deadline for SEE(M)OC is August 15<sup>th</sup>.**

**Registration will be through platform [orienteeringonline.net](http://orienteeringonline.net). If needed, entries can be done via our e-mail: [seeoc2022@gmail.com](mailto:seeoc2022@gmail.com). Elite Classes should make additional entry through the IOF Eventor Page.**

Entry is not valid until entry money is received in the organizer's account. We require that fees to be paid in EURO, or Romanian currency (RON), in advance to our bank account.

Fees can also be paid in cash at CC, but keep in mind that Romanian Law does not allow big cash payments!

Invoice shall be sent by email in maximum 2 days after the payment is confirmed. For this, each participant will send: name of the organization, person, VAT number, address, email.

Banking details for SEEOC and SEEMOC and WRE races:  
 Romanian Orienteering Federation, VAT number 4400824  
 Address: V. Conta Street, no. 16, Room 525, Sector 2, Bucharest  
 IBAN: RO52 RNCB 0074 0292 0364 0002 for Euro currency  
 IBAN: RO79 RNCB 0074 0292 0364 0001 for RON currency  
 SWIFT: RNCBROBU

## Entry fees - Romanian Grand Prix and Cups

Entry fees for Romanian Grand Prix will be as following:

Classes	Until May 11 <sup>th</sup>	Until July 11 <sup>th</sup>	Until August 15 <sup>th</sup>
MW16 and older	20€ all stages 6€ / stage	30€ all stages 8€ / stage	40€ all stages 10€ / stage
MW12 MW14	10€ all stages 3€ / stage	12€ all stages 4€ / stage	15€ all stages 5€ / stage
OPEN S/L	20€ all stages 6€ / stage	30€ all stages 8€ / stage	40€ all stages 10€ / stage
OPEN Beginners Baby Race, MW10	8€ all stages 2€ / stage	10€ all stages 3€ / stage	15€ all stages 4€ / stage

Entry fees for City of Victoria Cup (2 races on 23<sup>rd</sup> and 24<sup>th</sup> of August) and  
 “Purolite” Cup (Middle Distance parallel to Relay) will be as following:

Category	City of Victoria Cup		“Purolite” Cup	
	Until August 15 <sup>th</sup>	Until August 21 <sup>th</sup>	Until August 15 <sup>th</sup>	Until August 26 <sup>th</sup>
MW10, OPEN Beginners, Baby Race	2€ / stage	3€ / stage	2€ / stage	3€ / stage
MW14	3€ / stage	4€ / stage	3€ / stage	4€ / stage
MW18;65;75	4€ / stage	5€ / stage	4€ / stage	5€ / stage
MW21;35;45;55, Open T	5€ / stage	6€ / stage	5€ / stage	6€ / stage

Registration will be through platform orienteeringonline.net. If needed, entries can be done via our e-mail: [seeoc2022@gmail.com](mailto:seeoc2022@gmail.com).

Entry is not valid until entry money will be received in the organizer’s account.

All fees have to be paid in EURO or RON, in advance to the described bank accounts:

Banking details:

CLUBUL SPORTIV AL ELEVILOR VICTORIA, VAT number 26871822  
 IBAN: RO59 RNCB 0060 1158 8660 0005 for Euro currency  
 IBAN: RO70 RNCB 0060 1158 8660 0001 for RON currency  
 SWIFT: RNCBROBU

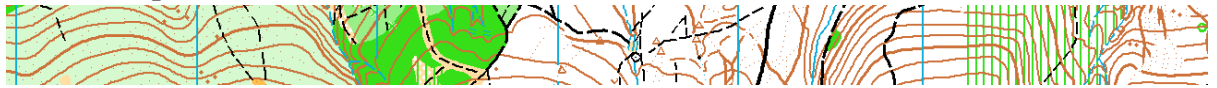
## Technical information

This section describes the main information about races, terrains and place of the finish arenas. More technical information to be posted on the website soon!

All maps in SEEOC / SEEMOC races will be printed on plastic paper. Warm-up maps will be provided at each TOM.

Tuesday Forest Sprint in Sumerna village

August 23<sup>th</sup> Mixed trees forest, with average terrain slopes, high density of pathways and water elements (springs, ponds, water courses). Start will be organized through random draws. Map: scale 1: 5.000, contours 2,5 m



Wednesday Middle Distance – Viștea-Mare Canton

August 24<sup>th</sup> Mixed trees forest, with average terrain slopes, high density of pathways and water elements (springs, ponds, water courses). Start will be organized through random draws. Map: scale 1: 7.500, contours 5m.



Sprint Prologue – City Center of Victoria

Small city with low terrain slopes, high density of green spaces between buildings, with various types of fences. Paved area will be around 50-70% of the race length.

The traffic will be slowed down during the race. Start will be organized through random draws. Map: scale 1:4.000, contours 2,5m



Thursday Sprint SEE(M)OC – City Center of Sibiu

August 25<sup>th</sup> Urban area, about 90% of the lengths will be paved, with low terrain slopes, high density of buildings, running on low traffic streets or pedestrian paved areas.

The traffic will be slowed down during the race in key crossings.

Start will be organized according to SEE(M)OC rules. Afterwards, National Championships, and then Grand Prix race will start. IOF Rules apply for elite runners.

Map: scale 1:4.000, contours 2,5m



Friday Long Distance – Rucăr Village

August 26<sup>th</sup> Broadleaf forest, with average and high terrain slopes, average density of pathways and many landforms. Mapping has been based on LIDAR survey.

Start will be organized according to SEE(M)OC rules. Afterwards, National Championships, and then Grand Prix race will start. IOF Rules apply for elite runners.



Map: scale 1: 10.000 (SEEOC, SEEMOC, 12-14 and Op)/ 15.000 (WRE), contours 5m



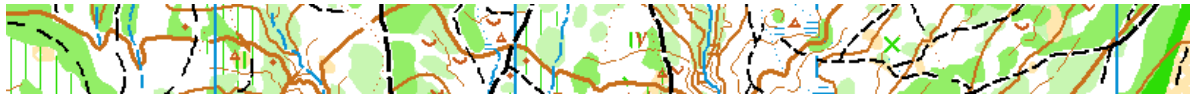
---

**Saturday** Relay and “Purolite” Cup – “Casa Zmeilor” Resort in Drăguș Village

August 27<sup>th</sup> Broadleaf forest, with average and high terrain slopes, average density of pathways and many landforms.

Start will be organized according to SEE(M)OC. Afterwards, “Purolite” Cup race will start.

Map: scale 1:7.500 (SEEMOC, 12-14 and Open) or 10.000 (SEEOC), contours 5m



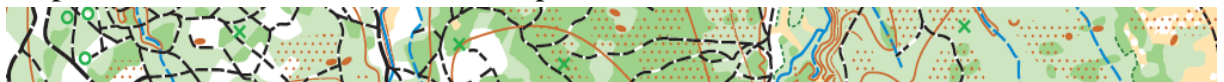
---

**Sunday** Middle Distance – Sumerna, Ucea Village

August 28<sup>th</sup> Broadleaf forest, with low terrain slopes, high density of small trees, pathways and rough land. The visibility in August will be low, between 10 and 50 meters outside paths.

Start will be organized according to SEE(M)OC rules. Afterwards, National Championships, and then Grand Prix race will start. IOF Rules apply for elite runners.

Map: scale 1:7.500 (>35, 12-14 and Open) or 10.000 (SEEOC, 35), contours 5m



## **Ceremonies and awards**

### **Awards for SEEOC & SEEMOC**

The awards for each class will be according to SEEOA rules, at each Finish Arena, after the competition. After Middle Distance, the participant countries shall be also awarded, after the final ranking is established for SEEOC and SEEMOC, distinctly.

### **Awards for Romanian Grand Prix**

The awards shall be given after last stage, after the prize giving ceremonies for SEEOC and SEEMOC, 28<sup>th</sup> of August, at 14:30.

### **Awards for City of Victoria Cup**

The awards shall be given after SEE(M)OC Opening Ceremony, 24<sup>th</sup> of August, at 19:00.

### **Awards for “Purolite” Cup**

The awards shall be given after prize giving ceremony for SEE(M)OC Relay, 27<sup>th</sup> of August, at 15:00.

## Finish arenas

As COVID or any other diseases may still occur, each participant will receive an individual bottle of water at finish, that can be deposited, after being emptied and flattened, only in indicated places of the arena. The local authorities, along with the organizers, at all races, are very strict regarding waste, for such big events!

Organizers will provide at the finish arenas (except for sprint race) military campaign tents, that can be used by all participants, for any weather conditions.

At the finish arenas, organizers will encourage local vendors and producers to install buffets and shops at SEE(M)OC finish arenas.

We also encourage orienteering and trail equipment vendors to install shops at the event's arenas. Interested people may send requests at the R.O.F. office, using [info@fro.ro](mailto:info@fro.ro). Without any previous agreement, no such booth shall be allowed in the arenas!

## Official Accommodation

**Official accommodation and team meetings shall be in Drăguș Village, 10 km away from the CC.**

There will be available rooms in “Casa Zmeilor” guesthouse, and in nearby guesthouses (max 1km away from it), as described below.

Reservations shall be made as soon as possible, as the capacity for accommodation and lunches is limited. Last day to make reservations is 1<sup>st</sup> of August!

In order to book a reservation, a 20% deposit for accommodation shall be paid. We will generate and send the deposit invoice in 2 days by email. If the financing rules of the participating federation/club requests, full total invoice can be sent before 5<sup>th</sup> of August, while cancelling the deposit invoice.

Lunches will be available in the “Casa Zmeilor” restaurant, as open buffet. The access will be made by tickets or bracelets, that will be received at the CC, at arrival.

At Long, Middle Distance and Sprint races, lunch will be delivered at arena, by the same restaurant.

The lunches can be paid through online banking, latest 22<sup>nd</sup> of August. Only late modifiers can be processed through cash payments at the CC, with limited cash, according to Romanian Law! All reservations shall be made at [info@fro.ro](mailto:info@fro.ro) or at the CC, if vacancies are still available.

Type	Price/night	Rooms available
*** “Casa Zmeilor” Resort double rooms	40€	9
*** “Casa Zmeilor” Resort triple rooms	55€	13
*** “Casa Zmeilor” Resort apartment for 4 guests	80€	2
*** Nearby guesthouse double rooms	40€	20
*** Nearby guesthouse triple rooms	55€	5
*** Nearby guesthouse apartment for 4 guests	80€	6
** Academy guesthouse double rooms	30€	35
** Academy guesthouse triple rooms	40€	4

Meals	Price/day	Availability
Full-board as open buffet, in “Casa Zmeilor” Resort, and lunch delivery at finish arenas (25 <sup>th</sup> , 26 <sup>th</sup> , 28 <sup>th</sup> )	20€	250
As an alternative, teams without full-board can have lunches delivered at finish arenas from different facility	7.5€/meal	-

**Banking details:**

**Romanian Orienteering Federation, VAT number 4400824**

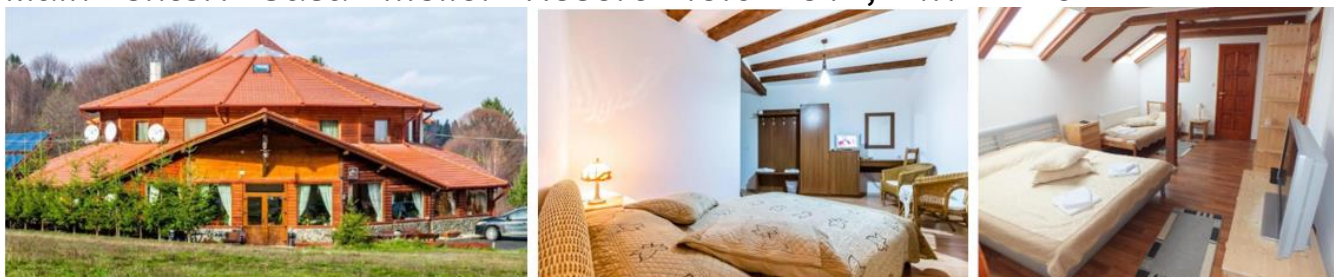
**Adress: V. Conta Street, no. 16, Room 525, Sector 2, Bucharest**

**IBAN: RO52 RNCB 0074 0292 0364 0002 for Euro currency**

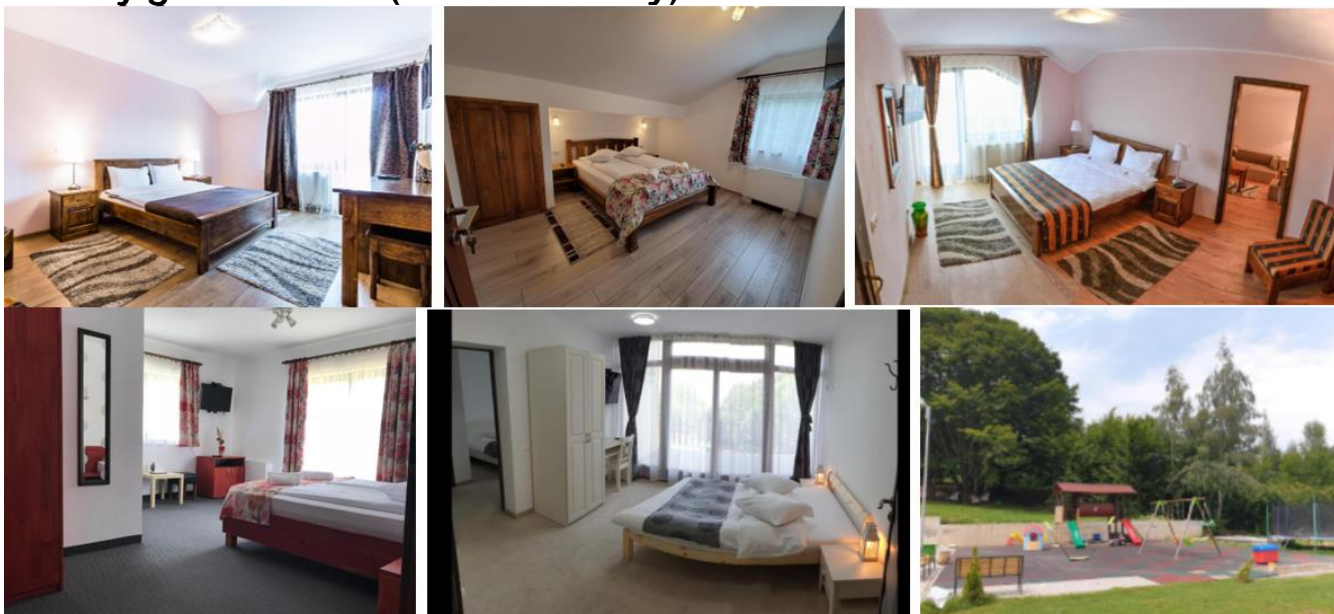
**IBAN: RO79 RNCB 0074 0292 0364 0001 for RON currency**

**BIC: RNCBROBU**

**Main center: “Casa Zmeilor” Resort - 45.692519, 24.782093**



**Nearby guesthouses (max.1km away)**





Academy guesthouse - 45.690681, 24.794200



Positioning of the accommodation and meals facilities:



## We are already grateful to our Official Partners:



South-east European Orienteering Association

[www.seeo.eu](http://www.seeo.eu)



Consiliul Judeţean  
Braşov

County of Braşov Authority

<https://www.judbrasov.ro/>



MINISTERUL SPORTULUI

Romanian Sports Ministry

<http://sport.gov.ro/>

&



Primaria Victoria

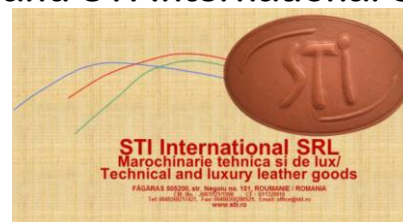


Din inima  
României



Primaria Municipiului Sibiu

Halls of Dragus, Ucea, Arpas, Lisa, Sambata and Vistea Communes,  
National Forest Authority “Romsilva”, “Casa Zmeilor” Resort – Ski Dragus,  
SKV Carpathian Transilvanian Tourist Association, Local Police Victoria,  
Student’s Sports Club of Victoria, Fagaras’ Country Association,  
Sports Club Ecosport, Local Forest Authorities “Arpas” & “Voila”,  
Mountain Constabulary “Sambata” & Mountain Rescue of Victoria  
Casa Zmeilor– Ski Dragus, Purolite S.R.L. and STI International S.R.L.





**Connected event: <https://www.jwoc2023.ro/>**



**Looking forward to see you in Romania in August 22!**